

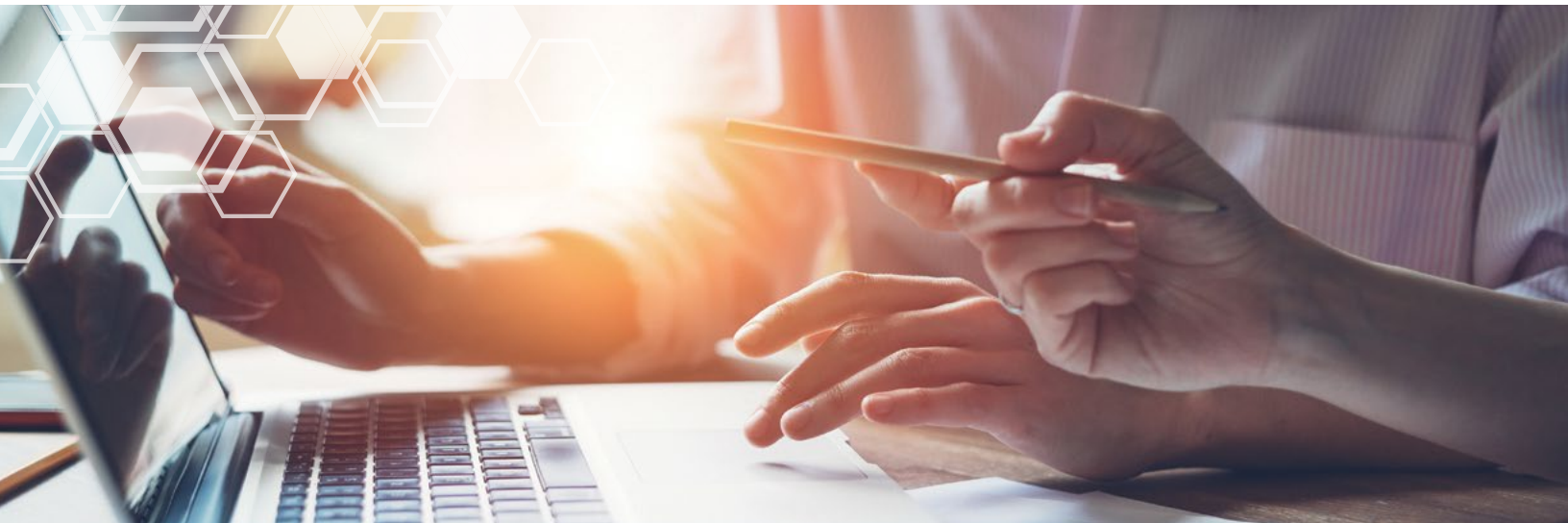


HELPING DELIVER LIFE-CHANGING THERAPIES



PPD FUNCTIONAL SERVICE PARTNERSHIP (FSP) SOLUTIONS  
**SITE SUPPORT SOLUTIONS**

# GET THE RIGHT MIX OF ON-SITE STAFF AND SERVICES TO OVERCOME SITE CHALLENGES AND MEET TIMELINES



Staff shortages are limiting clinical research sites' capacity for successful study execution, with particular impacts felt from the scarcity of site coordinators. Lack of sufficient staff in this integral role may impede capacity to accept new studies, enroll patients, keep up with administrative burdens, maintain quality, and meet deadlines.<sup>1</sup>

**PPD Site Support Solutions** overcomes site challenges to drive on-time delivery of studies, getting new medications to patients faster. Our services are co-created with clients, custom-fit to meet the needs of individual sites, and scalable to meet your changing needs.

---

According to CareerBuilder, there are currently **6.6 million clinical research jobs** posted in the U.S., yet only **5.7 million available hires**.

---

For every clinical research coordinator looking for a job, there are **seven jobs** posted. For nurses, the ratio is **one to 10**.

---

The number of registered clinical trials has tripled in the last decade<sup>2</sup> and is **growing at a 10% annual rate**.

<sup>1</sup> SCRS "Exploring the Current Clinical Workforce" presentation; N. Mills, SCRS Education and Knowledge Management Lead, July 2022. Available at <https://myscrs.org/resources/sites-now/exploring-the-current-clinical-workforce/>

<sup>2</sup> Total number registered clinical studies worldwide 2000-2022 | Statista

# CUSTOM-FIT SITE SUPPORT SOLUTIONS DRIVE ON-TIME STUDY DELIVERY



PPD helps biopharmaceutical, biotech, and medical device organizations meet study timelines by overcoming challenges at the site through bespoke support solutions available in a flexible functional service partnership (FSP) model. Backed by a 25-year track record of delivering FSP services, we know what it takes to reliably provide custom-fit solutions for both patient-facing and administrative on-site support.

## Patient-facing on-site support

*Tasks fulfilled by Clinical Research Managers*



Reviewing medical history



Performing informed consent



Administering investigational products



Conducting health assessments



Identifying and documenting protocol deviations

## Administrative on-site support

*Assistance provided to unburden site staff*



Entering data to relieve backlogs or prepare for database lock



Reviewing patient charts to support recruitment



Tracking biopsies



Maintaining adequate study supplies inventory



Supporting development of materials and tools



Setting up electronic devices used in the study

# HOW WE EXPAND THE TALENT POOL FOR THE BREADTH AND DEPTH OF EXPERTISE YOU NEED

Rather than relying solely on existing clinical research talent—and thus contributing to the industry site staff shortage—we take a three-pronged approach to attract, train, and develop diverse new talent pools of clinical research professionals in both patient-facing and administrative roles. New talent, in turn, lifts pressure from overburdened site staff, increasing the site’s capacity and productivity.

The result is a steady stream of strong diverse talent proven to be reliable and motivated, with the expertise and bandwidth needed to support overwhelmed site staff and accelerate study delivery.

## Our unique three-pronged approach to turn clinicians into Clinical Research Managers

1

### Global recruitment engine

- Established FSP recruitment model with dedicated staffing team and global reach
- Attracts high-achieving proven professionals who are agile, independent, and patient-centric
- Focus on diverse talent representation

2

### Forward-looking training

- Structured coursework at our Clinical Development Academy
- Hands-on preceptorship at one of our sites
- On-the-job colleague-led learning in client/site-specific standard operating procedures (SOPs)

3

### Development & retention

- Ongoing development programs, trainings, and coaching and mentoring
- Support from full force of PPD’s global infrastructure, resources, and access to specialized experts
- Superior training, professional development, and support

# BESPOKE SOLUTIONS SOLVE YOUR SPECIFIC CHALLENGES

All staff and service deployments are site-specific and based on project-specific needs and priorities. Whether you need short- or longer-term support, support for a single site or a whole network, patient-facing support and/or administrative support, we can apply the right solution.

We partner with you to personalize the outsourcing model for your and your sites' needs with the understanding that professionals will be following site standard operating procedures (SOPs), working in site systems, and working under oversight provided by the principal investigator. Our flexible models can evolve over time with built-in agility to rapidly keep pace with your growth or ramp down for cost efficiencies.



**Innovative pricing models to accommodate various contract structures, including:**

- Full-time equivalent (FTE) models
- Unit-based models
- Time & materials models
- Hybrid models

## Why Choose PPD Site Support Solutions?



**130+ recruitment professionals** with dedicated FSP staffing team



**Low 13.7% FSP staff turnover** compared to industry average of 21% as of March 2023



PPD is recognized as **one of the best global enterprise learning and development programs in the world** by the Association for Talent Development (ATD) in its 2022 ATD BEST Awards<sup>3</sup>

<sup>3</sup> [Thermo Fisher Scientific's Clinical Research Business Receives ATD Award for Employee Talent Development](#)

Talk with your account representative  
or visit [ppd.com/fsp-site-support](https://ppd.com/fsp-site-support) to learn  
more about how PPD Site Support Solutions  
can help overcome site challenges and  
drive on-time delivery of studies.



For more information  
visit our website at  
[ppd.com/fsp-site-support](https://ppd.com/fsp-site-support)



[twitter.com/PPDCRO](https://twitter.com/PPDCRO)



[facebook.com/PPDCRO](https://facebook.com/PPDCRO)



[youtube.com/PPDCRO](https://youtube.com/PPDCRO)



[linkedin.com/company/ppd](https://linkedin.com/company/ppd)