

# ISPOR 2026

**ThermoFisher**  
SCIENTIFIC



## Powering value and access

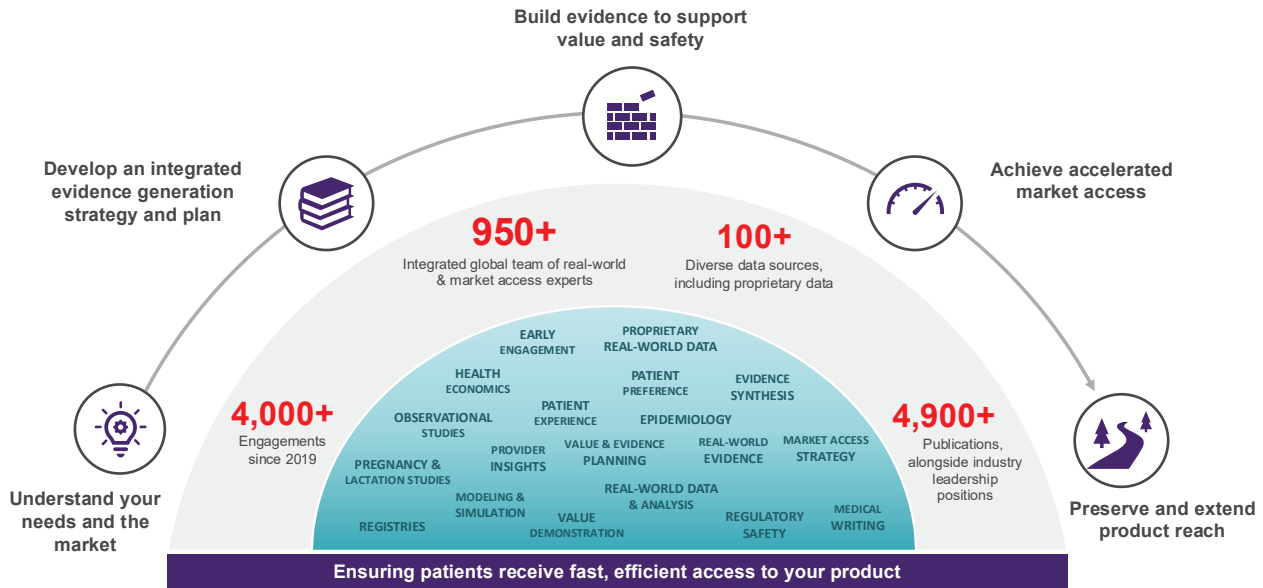
Get life-changing treatments to patients, faster.



ppd

# Partnering with you to bring innovative therapies to patients faster

From early pipeline planning to post-market access, our global scientific expertise spans the full product life cycle with customized consultative solutions. Partner with us to accelerate access and shape the future of health care with confidence.



## Overcome complex reimbursement hurdles

Reimbursement hurdles in health technology assessment (HTA) countries are higher and more complex than ever before. Our clients value our expertise in health economics and outcomes research (HEOR) strategy and in developing fit-for-purpose tools for successful submissions. These tools include health economic models with robust synthesis, indirect treatment comparisons, and advanced statistical analysis of trial data, all presented within a value-focused submission dossier narrative.

Our global team of consultants leverages extensive experience in economic modeling, HTA-compliant literature reviews, statistical analyses, and market access communications. By ensuring robust, tailored data for health economic models and HTA solutions, we drive study efficiency. We ensure you have a strong HEOR strategy and are well prepared with solid evidence for reimbursement discussions.

## Navigate access regulation change

The Inflation Reduction Act (IRA) and the EU Health Technology Assessment (HTA) Regulation bring about major changes in the US and EU access landscape that require early and strategic preparation to ensure an optimal evidence package to demonstrate value. Generation of real-world evidence (RWE) can be a useful tool in addressing the challenges arising from these new access policies and preparing for stakeholder discussions.

Our experts, with a unique combination of technical acumen and strategic vision, focus on helping you navigate the changes brought about by the US IRA and EU HTA Regulation, planning and preparing for the new US and EU landscapes.



Visit booth 611 or scan the QR code to request a meeting.

## Patient insights and inclusion

Patients are at the center of modern evidence generation and value demonstration.

We can help you:

- Create a tailored clinical outcomes assessment (COA) strategy to ensure patient relevance
- Embed patient interviews within clinical trials to enrich core clinical data and demonstrate wider patient-centric value
- Demonstrate value across a variety of treatment aspects with patient preference research
- Measure unmet need with primary data
- Inform evidence needs with quick, pragmatic patient and prescriber insights

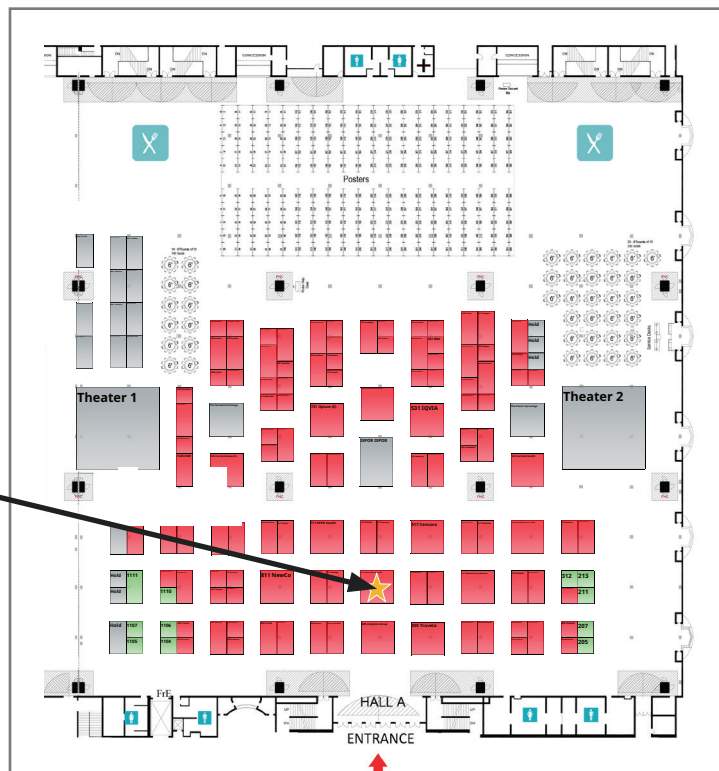
Collaborate with us to develop tailored best-in-class evidence strategies that carry the patient voice robustly and with impact into decisions across the product life cycle.

## Real-world data, evidence and registry solutions

Address your most challenging research questions with our fit-for-purpose real-world data (RWD) and real-world evidence (RWE) solutions, including the use of existing secondary data and global scale primary data collection. Our integrated methods result in enhanced timeline and work scope efficiency, reduced research burden and more customized evidence in support of safety, effectiveness and value.

We also offer a unique suite of industry-leading registry solutions. Building on decades of multi-national registry design and execution experience spanning diverse therapeutic areas, our solutions include a unique set of robust proprietary data derived from regulatory-grade longitudinal clinical registries.

**Stop by booth #611** to speak to our experts about our solutions!



**Visit booth 611 or scan the QR code to request a meeting.**

# Science on site

Presentations and poster sessions at ISPOR 2026



# Science on site

## Sunday, May 17

### Short course | 1:00 p.m. – 5:00 p.m.

**PROs in clinical trials: Endpoint selection, regulatory strategy and label claims**

Karen Bailey

## Monday, May 18

### Symposium | 12:15 p.m. – 1:15 p.m.

**Transforming HEOR with artificial intelligence and real-world data**

Mark Yates, Ashwin Kumar Rai, Melissa Ross, Apoorva Ambavane

### Workshop | 1:45 p.m. – 2:45 p.m.

**Use of agentic AI to create health economic models in both R and Excel**

J. Jaime Caro (Moderator), Apoorva Ambavane

### Poster Session 1 | 10:30 a.m. – 1:30 p.m.

**Indirect treatment comparisons in relapsed or refractory multiple myeloma: Insights from recent NICE submissions**

Shujun Li, Juan Idarraga, Denise Zou

**From GPT-4 to GPT-5.2: A comparative evaluation of large language models for extracting clinical real-world evidence (RWE) data**

Mariana Farraia, Anuja Pandey, Kassandra Schaible, Caroline von Wilamowitz-Moellendorff

**Automated study feasibility: Leveraging agentic AI to rapidly identify right fit secondary data**

Nicola Sawalhi-Leckenby, Mark Yates, Sarah Graham, Dimitra Lambrellu, Mireia Raluy Callado, Ashwin Rai

**Use of item response theory to create multi-dimensional measures of financial toxicity in cancer**

Salene Jones, Matt Barnett, Jean Yi, Nora Henrikson, Diana Lowry, Renae Lydum, Laura Panattoni



**ISPOR top 5% featured poster**  
**Poster session 1**

**Changes in pain and stiffness experienced by patients with tenosynovial giant cell tumor (TGCT) in the maneuver phase 3 trial: Insights from exit interviews**

Vinod Ravi, Paul Kamudoni, Andrea Phillips Beyer, Niki Karachaliou, Amy Clark, Agkreta Leventi, Savita Bakhshi Anand, Carla Dias Barbosa, Hans Gelderblom



**Visit booth 611 or scan the QR code to request a meeting.**

# Science on site

## Poster Session 2 | 4:00 p.m. – 7:00 p.m.

### Using shortfall metrics to prioritize therapeutic innovation in oncology

Ariel Sun, Neda Aminnejad, Sonja Sorensen

### Context-aware generative AI for evidence generation, analog-driven enrollment forecasting, and operational risk management in oncology trials

Ashwin Rai, Victorio Ikoro Devika Bhandary, Andre Ng, Marielle Bassel

### New failure modes, old standards: Why artificial intelligence (AI) demands different validation approaches in evidence synthesis

Priscilla Zuchinali, Cassandra Schaible, Allie Cichewicz

### A portfolio modeling framework for HEOR decision making

Sonja Sorensen, Ariel Sun, Neda Aminnejad

### Increasing efficiency of systematic literature reviews: Are multiple databases necessary?

Kassandra Schaible, Monica Turner

### Identifying (dis-)agreement between models for evaluation of effectiveness of risk minimization measures (RMMS)

M.A Natividad Sancho

### Insights into range of motion (ROM) and physical function (PF) changes experienced by patients with tenosynovial giant cell tumor (TGCT) in the maneuver phase 3 trial: Results from exit interviews

Vinod Ravi, Paul Kamudoni, Andrea Phillips Beyer, Niki Karachaliou, Qingping Zou, Amy Clark, Agkreta Leventi, Savita Bakhshi Anand, Carla Dias Barbosa, Hans Gelderblom

## Tuesday, May 19

### Forum | 12:15 p.m. – 1:15 p.m.

#### Aligning HEOR with global policy shifts: How should we lead and influence?

Priya Jain

### Breakout Session | 1:45 p.m. – 2:45 p.m.

#### Beyond Cronbach's Alpha: Modern reliability assessment for COA research and regulatory decision-making

Danielle Rodriguez, Patrick Daniele

### Forum | 4:45 p.m. – 5:45 p.m.

#### Following the trail: A journey of individual patient preference data from response to analysis to clinical encounter

Jennifer Whitty



Visit booth 611 or  
scan the QR code  
to request a meeting.

# Science on site

## Poster Session 3 | 10:30 a.m. – 1:30 p.m.

**Pre-approval information exchange (PIE) in the United States. Trends following the passage of the PIE act: Where are we now?**  
Anna De Boer, Don Smith

**What HTA bodies criticize in indirect treatment comparisons for advanced cancers: A thematic analysis of recent HTA reports in solid tumors**  
Marissa Betts, Nicholas Parr, Jo Campbell, Kyle Fahrback

**Understanding perspectives, barriers and enablers for clinical trial participation in representative patient populations**  
K. Meginnis, H. Clarke, E. Webb, A. Skalicky, O. Babalola, T. Gray, D. Gebben, L. Perreras, M. Malone, R. Wright, C. Grossman, J. Whitty

**A structured framework for sampling strategy design in large-scale real-world chart review studies**  
Lauren Gianchetti, Neil Brett, Marielle Bassel

## Poster Session 4 | 4:00 p.m. – 7:00 p.m.

**Performance of adaptive smart tags in nested knowledge for automated extraction of study characteristics**  
Priccila Zuchinali, Sophie Yoon, Joanna Kamar, Amber Martin

**A qualitative study to explore patient perspectives on future gene therapy for limb girdle muscular dystrophy (LGMD) sarcoglycanopathy subtypes 2E/R4, 2D/R3, and 2C/R5**  
I. Audhya, A. Nacson, H. Collacott, N. Ramachandran, M.K. Ladd, K. Gooch, J. Whitty

**Neurologist preferences for new MS treatments: Implications for market access prioritization in the United States and Europe**  
Sarah Mulnick, Jennifer A. Whitty, Gabriela S. Fernandez, Sebastian Heidenreich, Janneke Van Wingerden, Nupur Greene

## Wednesday May 20

## Poster Session 5 | 9:00 a.m. – 10:00 a.m.

**Economic analyses of gender-affirming care: A literature review**  
K. Sandman, M. Andrawes

**Can PubMed alone capture the evidence base for targeted literature reviews? A case study**  
Priscilla Wittkopf, Rajat Goel, Kassandra Schaible, Caroline von Wilamowitz-Moellendorff

**Using AI to map HEOR evidence gaps: Findings from a large-scale LLM-based classification analysis**  
Weicheng Ye, Corrina Mau, Denise Zou



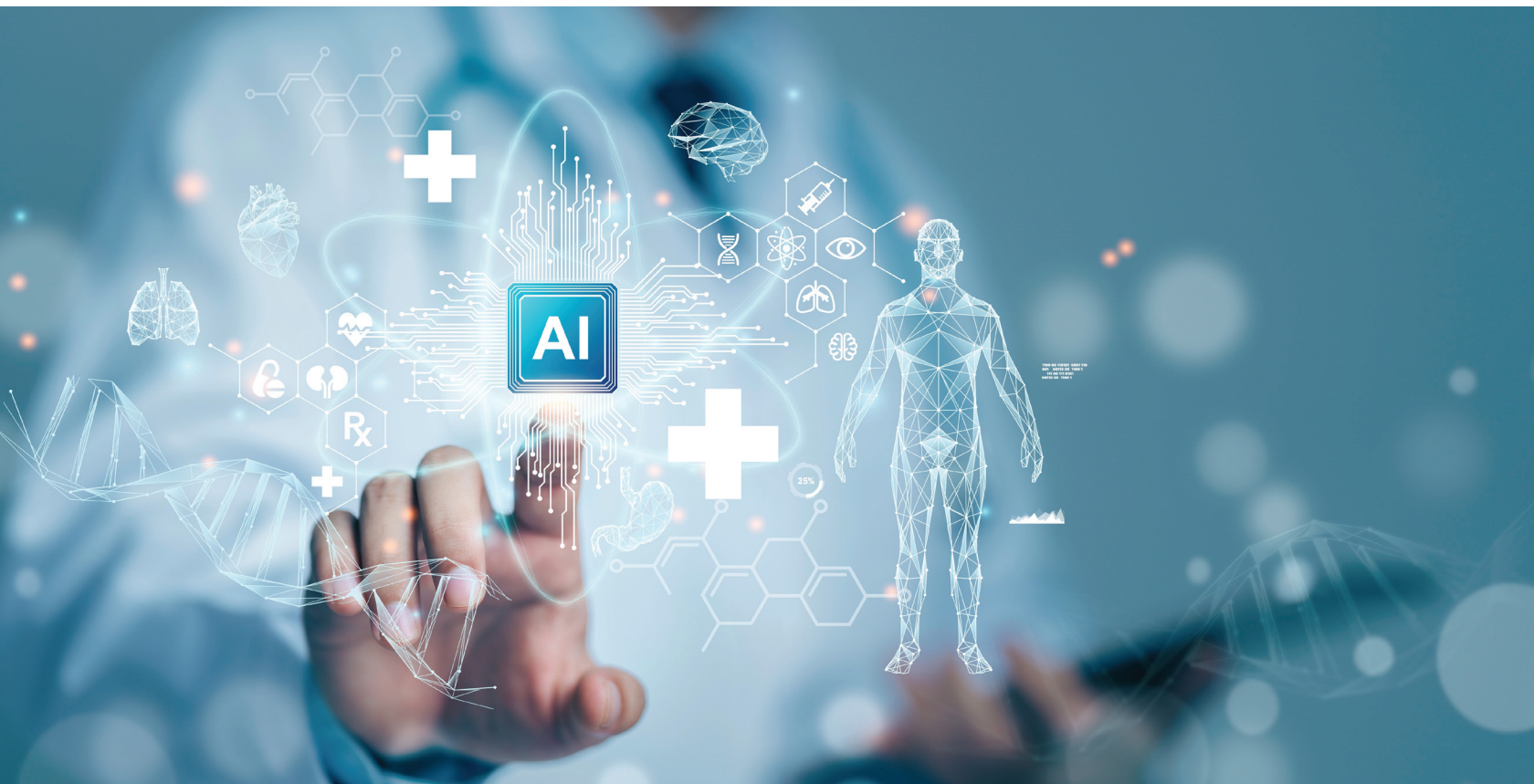
**ISPOR top 5% featured poster**  
**Poster session 1**

**Surviving unanchored indirect comparisons: An extension of multilevel unanchored meta-regression (ML-UMR) for survival analyses**

Conor Chandler, Jack Ishak



**Visit booth 611 or scan the QR code to request a meeting.**



Visit booth 611 or  
scan the QR code  
to request a meeting.

Learn more at [ppd.com/hema](https://ppd.com/hema)

ppd